



# *Wesley Manor: Redefining Home*

## Reframing, Renewing & Renovating Together

April 20, 2016

Dear Wesley Manor Family and Friends:

The construction of the additions to Wesley Manor is in full swing! We are close to pouring slabs for the therapy and household areas for the new rehabilitation center, and I am happy to report that all is on schedule! You no doubt have noticed some associated temporary drive reconfiguration, and we appreciate your patience with any inconvenience.

As I have previously shared, it will be my distinct pleasure to update you each month on the status of our construction and cultural change efforts. I will focus each month on a different component of our progress, and will often refer to the Wesley Manor Site Plan, which is provided for you on the reverse side of this letter. Please remember that Wesley Manor will also send periodic notices or other announcements as the situation may warrant, and our new entry-area information boards will also contain other important information.

### **April spotlight...What is a Household?**

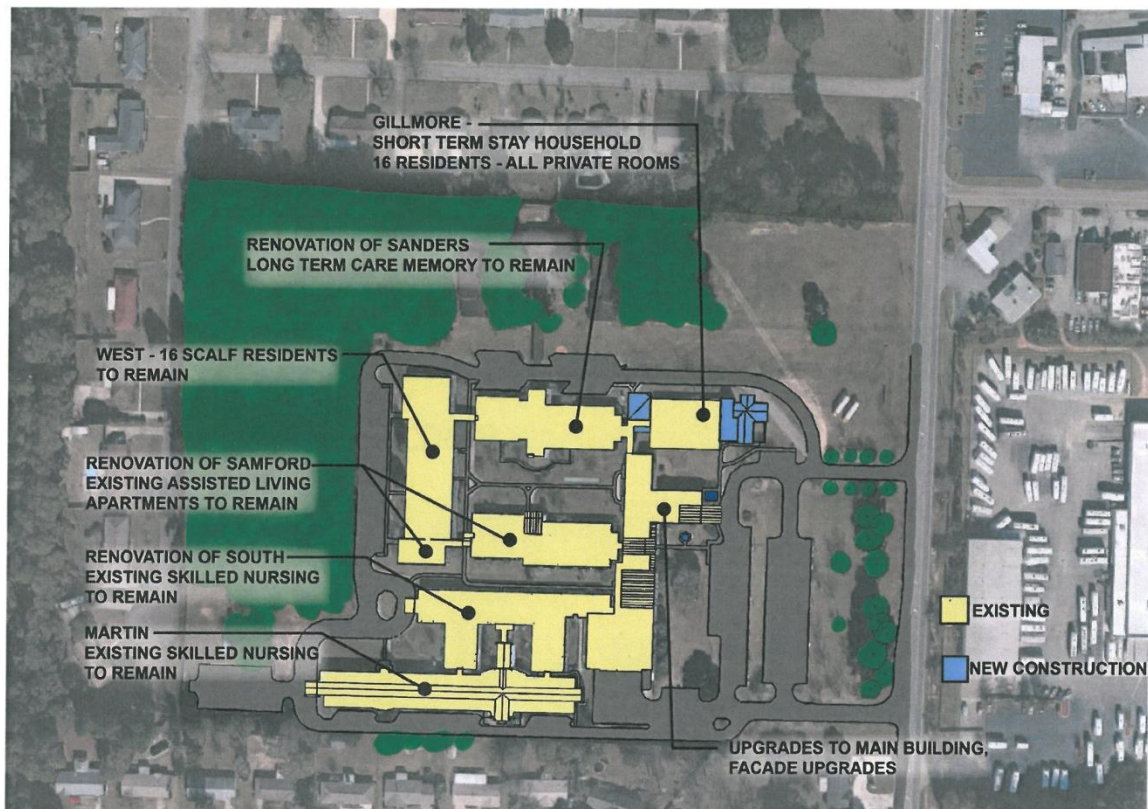
Last month I highlighted the Short Term Stay Rehabilitation Center, which is comprised of a household of up to 16 residents. This and several other areas in the skilled nursing area, are being constructed or renovated in this “household” fashion. This is differentiated from the concept of “neighborhoods”, which Wesley Manor will also utilize, and I look forward to sharing more about neighborhoods in future communications.

So what exactly is a household? This is an excellent question and deserves further exploration. Definitionally, a skilled nursing household is an area where elders live and commune in a small setting, where they are assisted by a group of associates operating in self-led teams. Development of relationships is central to the household concept, with associates and other residents becoming akin to extended family members for household residents. The physical surrounding of all private resident rooms and baths, living room, den, dining room, kitchen, and other areas, are all designed to mimic the feel, smell and experience of a true home instead of an institutional environment. For example, instead of meals being delivered in a pre-plated fashion on trays with dome covers, meals will be served in a household much like we do in our own homes. Some of the food will also be prepared in the household itself, often with the assistance of those who wish to participate in this activity with which so many of us have a life-long love! The examples of an improved quality of life in this environment often seem limitless, but are best summed up by the fact that “life happens in the household”. What a glorious day this will be!

I look forward to sharing with you again next month as our journey continues. Thank you for your continued support of Wesley Manor.

Very truly yours,

Christopher W. Tomlin  
President & CEO  
Methodist Homes of Alabama & Northwest Florida



Wesley Manor Site Plan