



December 20, 2016

Dear Wesley Place on Honeysuckle Family and Friends:

What a glorious year it has been for Wesley Place on Honeysuckle! We have all seen so much progress made on campus construction-wise, both interior and exterior. And despite the inconveniences we have all experienced, the environments which are being created are such a breathtaking and welcome departure from the institutional culture of senior care we have known for decades! We are so blessed and give thanks, particularly at this time of year.

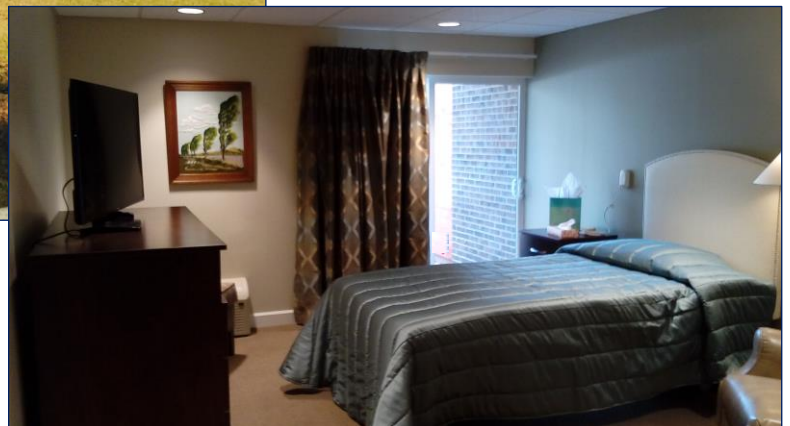
At the beginning of this month, we celebrated the opening of The Rehab Inn at Wesley Place on Honeysuckle, which is the first true household model in the state of Alabama! The details and descriptions I have written about in previous months relating to households are now on full display, as you can certainly see below. What a monumental achievement for the residents, associates and leadership of the community! It is my hope that each of you will have the chance to visit The Rehab Inn in the very near future to see this fundamental shift in culture and operation first-hand.

I request that you please continue to pray for guidance, wisdom and strength as we march forward in our renovations and construction. Although the completion date, which has shifted to late March, is beginning to come into focus, much remains to accomplish. Thank you to each of you for your patience in this wonderful process. I look forward to seeing you at our "Dedication and Open House" this coming April!

December Spotlight... **Construction Progress**



The Rehab Inn





New Therapy Gym

I look forward to sharing with you again next month as our journey continues. Thank you for your continued support of Wesley Place on Honeysuckle.

Very truly yours,

Christopher W. Tomlin
President & CEO
Methodist Homes of Alabama & Northwest Florida