



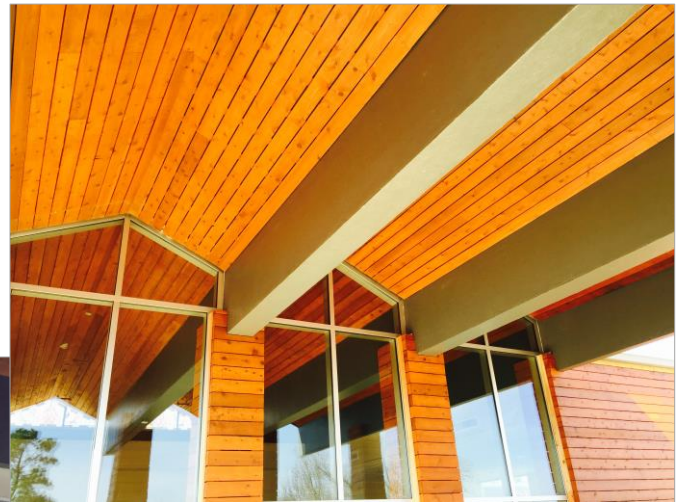
February 20, 2017

Dear Wesley Place on Honeysuckle Family and Friends:

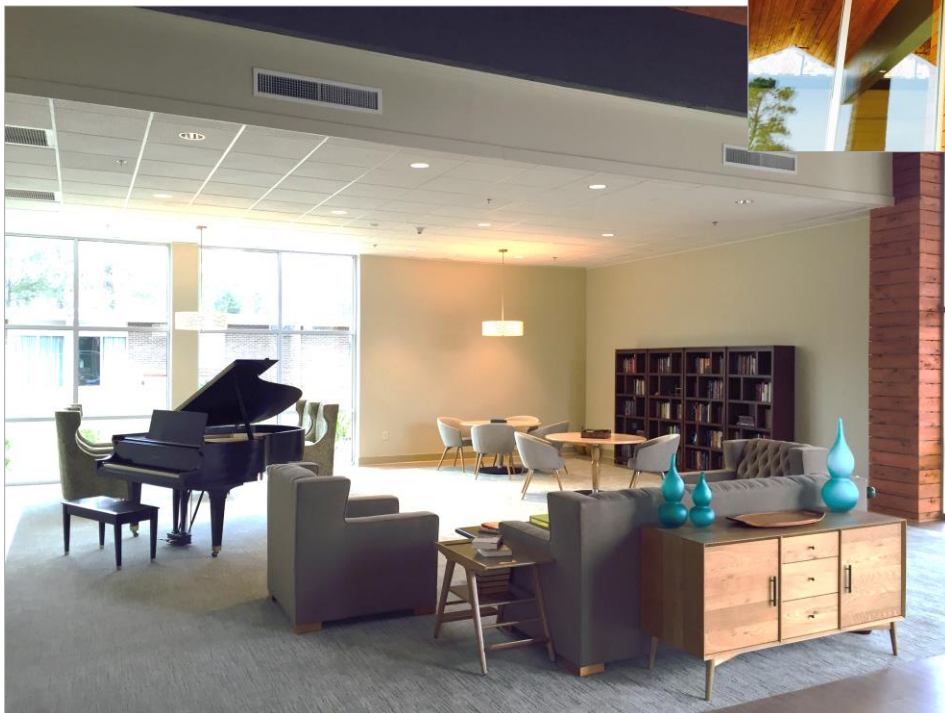
As I wrote to you last month, we have had ongoing construction and renovation for almost a full year! The assisted living and nursing areas are still on schedule to be completed within the month of March, and we are so very excited at the wonderful new environment that has been created! We will continue to modify some of the common areas in the Martin neighborhood as we press on in our journey from the institutional model to the neighborhood and household model. The households and neighborhoods are truly breathtaking, and worth every challenge we have had to overcome.

When I write to you in March, all the new areas should be open, occupied and operational. At that time, we will have firm plans to share with you for a service of celebration and re-dedication to be held in April.

February Spotlight... **Construction Progress**



Welcome Center / Front Living Room

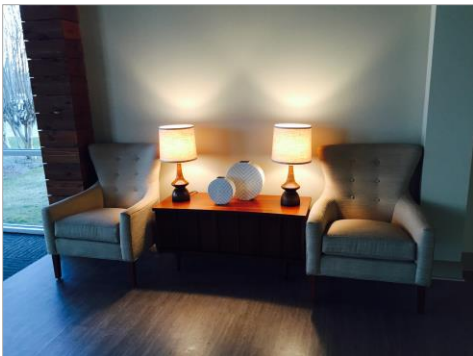


Beautiful wood screen overhead at entrance, outside and inside.



Landscaping the front lawn

Extensive Renovations Inside



I look forward to sharing with you again next month as our journey continues. Thank you for your continued support of Wesley Place on Honeysuckle.

Very truly yours,

Christopher W. Tomlin
President & CEO
Methodist Homes of Alabama & Northwest Florida