



March 20, 2017

Dear Wesley Place on Honeysuckle Family and Friends:

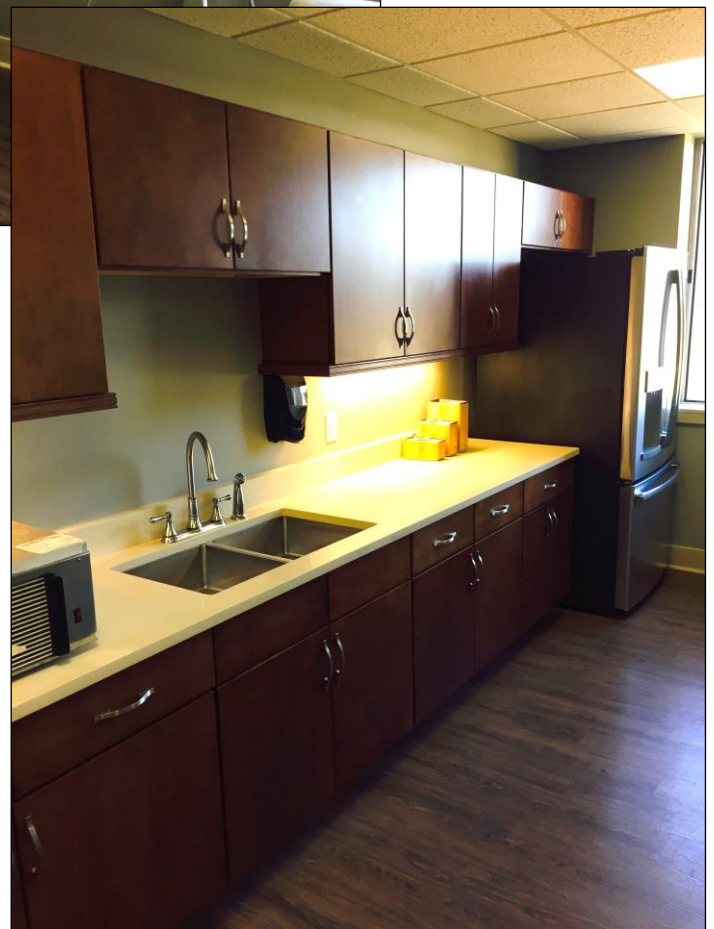
It is finally here! Plans are in motion for a day of celebration that represents a first for the state of Alabama – the first senior living community in the state to fully embrace and implement the household and neighborhood model of care. Please join us on **Thursday, April 27, 2017, at 11:30 am** for a Ribbon-Cutting and Dedication Celebration! After the brief ceremony, enjoy a buffet luncheon, a brief tour, and photo gallery tour of the new Wesley Place on Honeysuckle. Rain or shine, we have a plan to accommodate this historic celebration. We want you to be a part of this special day! For the most up-to-date information concerning Wesley Place on Honeysuckle and the celebration on April 27, like us on Facebook.

March Spotlight... **Turning Our Full Attention to the Neighborhoods**

We have opened our households, and now have turned our full attention to finishing the long term care neighborhoods. Last May we talked about how neighborhoods are very similar to households in both function and culture. Residents living in the neighborhoods are encouraged to determine their own schedules, and make choices about how to spend their days, with staff available to assist them much like family members do. The regimented and restricting routines of traditional care staff, such as med cart passes and bathing schedules, are a thing of the past. Prominent nurses stations are being dismantled and the space repurposed for resident enjoyment.

Shared resident spaces in the neighborhoods, such as living rooms, neighborhood kitchens, and home-style dining rooms, are comfortable and functional and have the look and feel of home. Neighborhoods also experience dramatic differences in dining. No longer will meals be served on trays that come from a central kitchen, but will be plated and served from each neighborhood kitchen, like you and I do at our own homes. Neighborhood kitchens are equipped to accommodate minor cooking and made-to-order continental breakfast choices for those who prefer such. Residents get a say in the activities as well as snack choices of their neighborhood. What a wonderful environment that encourages living life to the fullest each and every day!





Modern 'wood rain screen' complete along front entrance. New planter to burst with spring color soon.

I look forward to seeing everyone on April 27, in just over a month's time, for our Ribbon-Cutting and Dedication Celebration. Thank you for your continued support of Wesley Place on Honeysuckle.

Very truly yours,

Christopher W. Tomlin
President & CEO
Methodist Homes of Alabama & Northwest Florida